

ANNEX I
SUMMARY OF PRODUCT CHARACTERISTICS

▼ This medicinal product is subject to additional monitoring. This will allow quick identification of new safety information. Healthcare professionals are asked to report any suspected adverse reactions. See section 4.8 for how to report adverse reactions.

1. NAME OF THE MEDICINAL PRODUCT

Xtandi 40 mg soft capsules

2. QUALITATIVE AND QUANTITATIVE COMPOSITION

Each soft capsule contains 40 mg of enzalutamide.

Excipient with known effect:

Each soft capsule contains 52.4 mg of sorbitol.

For the full list of excipients, see section 6.1.

3. PHARMACEUTICAL FORM

Soft capsule.

White to off-white oblong soft capsules (approximately 20 mm x 9 mm) imprinted with “ENZ” in black ink on one side.

4. CLINICAL PARTICULARS

4.1 Therapeutic indications

Xtandi is indicated for:

- the treatment of adult men with metastatic castration-resistant prostate cancer who are asymptomatic or mildly symptomatic after failure of androgen deprivation therapy in whom chemotherapy is not yet clinically indicated (see section 5.1)
- the treatment of adult men with metastatic castration-resistant prostate cancer whose disease has progressed on or after docetaxel therapy.

4.2 Posology and method of administration

Posology

The recommended dose is 160 mg enzalutamide (four 40 mg capsules) as a single oral daily dose.

Medical castration with an LHRH analogue should be continued during treatment of patients not surgically castrated.

If a patient misses taking Xtandi at the usual time, the prescribed dose should be taken as close as possible to the usual time. If a patient misses a dose for a whole day, treatment should be resumed the following day with the usual daily dose.

If a patient experiences a \geq Grade 3 toxicity or an intolerable adverse reaction, dosing should be withheld for one week or until symptoms improve to \leq Grade 2, then resumed at the same or a reduced dose (120 mg or 80 mg) if warranted.

Concomitant use with strong CYP2C8 inhibitors

The concomitant use of strong CYP2C8 inhibitors should be avoided if possible. If patients must be co-administered a strong CYP2C8 inhibitor, the dose of enzalutamide should be reduced to 80 mg once daily. If co-administration of the strong CYP2C8 inhibitor is discontinued, the enzalutamide dose should be returned to the dose used prior to initiation of the strong CYP2C8 inhibitor (see section 4.5).

Older people

No dose adjustment is necessary for older people (see section 5.1 and 5.2).

Hepatic impairment

No dose adjustment is necessary for patients with mild, moderate or severe hepatic impairment (Child-Pugh Class A, B or C, respectively). An increased drug half-life has however been observed in patients with severe hepatic impairment (see section 4.4 and 5.2).

Renal impairment

No dose adjustment is necessary for patients with mild or moderate renal impairment (see section 5.2). Caution is advised in patients with severe renal impairment or end-stage renal disease (see section 4.4).

Paediatric population

There is no relevant use of enzalutamide in the paediatric population in the indication of treatment of adult men with metastatic castration-resistant prostate cancer.

Method of administration

Xtandi is for oral use. The capsules should be swallowed whole with water, and can be taken with or without food.

4.3 Contraindications

Hypersensitivity to the active substance or to any of the excipients listed in section 6.1.

Women who are or may become pregnant (see section 4.6).

4.4 Special warnings and precautions for use

Risk of seizure

Caution should be used in administering Xtandi to patients with a history of seizures or other predisposing factors including, but not limited to, underlying brain injury, stroke, primary brain tumours or brain metastases, or alcoholism. In addition, the risk of seizure may be increased in patients receiving concomitant medicinal products that lower the seizure threshold. The decision to continue treatment in patients who develop seizure should be taken case by case.

Posterior reversible encephalopathy syndrome

There have been rare reports of posterior reversible encephalopathy syndrome (PRES) in patients receiving Xtandi (see section 4.8). PRES is a rare, reversible, neurological disorder which can present with rapidly evolving symptoms including seizure, headache, confusion, blindness, and other visual and neurological disturbances, with or without associated hypertension. A diagnosis of PRES requires confirmation by brain imaging, preferably magnetic resonance imaging (MRI). Discontinuation of Xtandi in patients who develop PRES is recommended.

Concomitant use with other medicinal products

Enzalutamide is a potent enzyme inducer and may lead to loss of efficacy of many commonly used medicinal products (see examples in section 4.5). A review of concomitant medicinal products should therefore be conducted when initiating enzalutamide treatment. Concomitant use of enzalutamide with medicinal products that are sensitive substrates of many metabolising enzymes or transporters (see section 4.5) should generally be avoided if their therapeutic effect is of large importance to the patient,

and if dose adjustments cannot easily be performed based on monitoring of efficacy or plasma concentrations.

Co-administration with warfarin and coumarin-like anticoagulants should be avoided. If Xtandi is co-administered with an anticoagulant metabolised by CYP2C9 (such as warfarin or acenocoumarol), additional International Normalised Ratio (INR) monitoring should be conducted (see section 4.5).

Renal impairment

Caution is required in patients with severe renal impairment as enzalutamide has not been studied in this patient population.

Severe hepatic impairment

An increased drug half-life has been observed in patients with severe hepatic impairment, possibly related to increased tissue distribution. The clinical relevance of this observation remains unknown. A prolonged time to reach steady state concentrations is however anticipated, and the time to maximum pharmacological effect as well as time for onset and decline of enzyme induction (see section 4.5) may be increased.

Recent cardiovascular disease

The phase 3 studies excluded patients with recent myocardial infarction (in the past 6 months) or unstable angina (in the past 3 months), New York Heart Association Class (NYHA) III or IV heart failure except if Left Ventricular Ejection Fraction (LVEF) \geq 45%, bradycardia or uncontrolled hypertension. This should be taken into account if Xtandi is prescribed in these patients.

Androgen deprivation therapy may prolong the QT interval

In patients with a history of or risk factors for QT prolongation and in patients receiving concomitant medicinal products that might prolong the QT interval (see section 4.5) physicians should assess the benefit risk ratio including the potential for Torsade de pointes prior to initiating Xtandi.

Use with chemotherapy

The safety and efficacy of concomitant use of Xtandi with cytotoxic chemotherapy has not been established. Co-administration of enzalutamide has no clinically relevant effect on the pharmacokinetics of intravenous docetaxel (see section 4.5); however, an increase in the occurrence of docetaxel-induced neutropenia cannot be excluded.

Excipients

Xtandi contains sorbitol (E420). Patients with rare hereditary problems of fructose intolerance should not take this medicinal product.

Hypersensitivity reactions

Hypersensitivity reactions manifested by symptoms including, but not limited to, tongue oedema, lip oedema and pharyngeal oedema have been observed with enzalutamide (see section 4.8).

4.5 Interaction with other medicinal products and other forms of interaction

Potential for other medicinal products to affect enzalutamide exposures

CYP2C8 inhibitors

CYP2C8 plays an important role in the elimination of enzalutamide and in the formation of its active metabolite. Following oral administration of the strong CYP2C8 inhibitor gemfibrozil (600 mg twice daily) to healthy male subjects, the AUC of enzalutamide increased by 326% while C_{max} of enzalutamide decreased by 18%. For the sum of unbound enzalutamide plus the unbound active metabolite, the AUC increased by 77% while C_{max} decreased by 19%. Strong inhibitors (e.g. gemfibrozil) of CYP2C8 are to be avoided or used with caution during enzalutamide treatment. If patients must be co-administered a strong CYP2C8 inhibitor, the dose of enzalutamide should be reduced to 80 mg once daily (see section 4.2).

CYP3A4 inhibitors

CYP3A4 plays a minor role in the metabolism of enzalutamide. Following oral administration of the strong CYP3A4 inhibitor itraconazole (200 mg once daily) to healthy male subjects, the AUC of enzalutamide increased by 41% while C_{max} was unchanged. For the sum of unbound enzalutamide plus the unbound active metabolite, the AUC increased by 27% while C_{max} was again unchanged. No dose adjustment is necessary when Xtandi is co-administered with inhibitors of CYP3A4.

CYP2C8 and CYP3A4 inducers

Following oral administration of the moderate CYP2C8 and strong CYP3A4 inducer rifampin (600 mg once daily) to healthy male subjects, the AUC of enzalutamide plus the active metabolite decreased by 37% while C_{max} remained unchanged. No dose adjustment is necessary when Xtandi is co-administered with inducers of CYP2C8 or CYP3A4.

Potential for enzalutamide to affect exposures to other medicinal products

Enzyme induction

Enzalutamide is a potent enzyme inducer and increases the synthesis of many enzymes and transporters; therefore, interaction with many common medicinal products that are substrates of enzymes or transporters is expected. The reduction in plasma concentrations can be substantial, and lead to lost or reduced clinical effect. There is also a risk of increased formation of active metabolites. Enzymes that may be induced include CYP3A in the liver and gut, CYP2B6, CYP2C9, CYP2C19, and uridine 5'-diphospho-glucuronosyltransferase (UGTs - glucuronide conjugating enzymes). The transport protein P-gp may also be induced, and probably other transporters as well, e.g. multidrug resistance-associated protein 2 (MRP2), breast cancer resistance protein (BCRP) and the organic anion transporting polypeptide 1B1 (OATP1B1).

In vivo studies have shown that enzalutamide is a strong inducer of CYP3A4 and a moderate inducer of CYP2C9 and CYP2C19. Co-administration of enzalutamide (160 mg once daily) with single oral doses of sensitive CYP substrates in prostate cancer patients resulted in an 86% decrease in the AUC of midazolam (CYP3A4 substrate), a 56% decrease in the AUC of S-warfarin (CYP2C9 substrate), and a 70% decrease in the AUC of omeprazole (CYP2C19 substrate). UGT1A1 may have been induced as well. In a clinical study in patients with metastatic CRPC, Xtandi (160 mg once daily) had no clinically relevant effect on the pharmacokinetics of intravenously administered docetaxel (75 mg/m² by infusion every 3 weeks). The AUC of docetaxel decreased by 12% [geometric mean ratio (GMR) = 0.882 (90% CI: 0.767, 1.02)] while C_{max} decreased by 4% [GMR = 0.963 (90% CI: 0.834, 1.11)].

Interactions with certain medicinal products that are eliminated through metabolism or active transport are expected. If their therapeutic effect is of large importance to the patient, and dose adjustments are not easily performed based on monitoring of efficacy or plasma concentrations, these medicinal products are to be avoided or used with caution. The risk for liver injury after paracetamol administration is suspected to be higher in patients concomitantly treated with enzyme inducers.

Groups of medicinal products that can be affected include, but are not limited to:

- Analgesics (e.g. fentanyl, tramadol)
- Antibiotics (e.g. clarithromycin, doxycycline)
- Anticancer agents (e.g. cabazitaxel)
- Anticoagulants (e.g. acenocoumarol, warfarin)
- Antiepileptics (e.g. carbamazepine, clonazepam, phenytoin, primidone, valproic acid)
- Antipsychotics (e.g. haloperidol)
- Betablockers (e.g. bisoprolol, propranolol)
- Calcium channel blockers (e.g. diltiazem, felodipine, nifedipine, verapamil)
- Cardiac glycosides (e.g. digoxin)
- Corticosteroids (e.g. dexamethasone, prednisolone)
- HIV antivirals (e.g. indinavir, ritonavir)

- Hypnotics (e.g. diazepam, midazolam, zolpidem)
- Statins metabolized by CYP3A4 (e.g. atorvastatin, simvastatin)
- Thyroid agents (e.g. levothyroxine)

The full induction potential of enzalutamide may not occur until approximately 1 month after the start of treatment, when steady-state plasma concentrations of enzalutamide are reached, although some induction effects may be apparent earlier. Patients taking medicinal products that are substrates of CYP2B6, CYP3A4, CYP2C9, CYP2C19, or UGT1A1 should be evaluated for possible loss of pharmacological effects (or increase in effects in cases where active metabolites are formed) during the first month of enzalutamide treatment, and dose adjustment should be considered as appropriate. In consideration of the long half-life of enzalutamide (5.8 days, see section 5.2), effects on enzymes may persist for one month or longer after stopping enzalutamide. A gradual dose reduction of the concomitant medicinal product may be necessary when stopping enzalutamide treatment.

CYP1A2 and CYP2C8 substrates

Enzalutamide (160 mg once daily) did not cause a clinically relevant change in the AUC or C_{max} of caffeine (CYP1A2 substrate) or pioglitazone (CYP2C8 substrate). The AUC of pioglitazone increased by 20% while C_{max} decreased by 18%. The AUC and C_{max} of caffeine decreased by 11% and 4% respectively. No dose adjustment is indicated when a CYP1A2 or CYP2C8 substrate is co-administered with Xtandi.

P-gp substrates

In vitro data indicate that enzalutamide may be an inhibitor of the efflux transporter P-gp. The effect of enzalutamide on P-gp substrates has not been evaluated *in vivo*; however, under conditions of clinical use, enzalutamide may be an inducer of P-gp via activation of the nuclear pregnane receptor (PXR). Medicinal products with a narrow therapeutic range that are substrates for P-gp (e.g. colchicine, dabigatran etexilate, digoxin) should be used with caution when administered concomitantly with Xtandi and may require dose adjustment to maintain optimal plasma concentrations.

BCRP, MRP2, OAT3 and OCT1 substrates

Based on *in vitro* data, inhibition of BCRP and MRP2 (in the intestine), as well as organic anion transporter 3 (OAT3) and organic cation transporter 1 (OCT1) (systemically) cannot be excluded. Theoretically, induction of these transporters is also possible, and the net effect is presently unknown.

Medicinal products which prolong the QT interval

Since androgen deprivation treatment may prolong the QT interval, the concomitant use of Xtandi with medicinal products known to prolong the QT interval or medicinal products able to induce Torsade de pointes such as class IA (e.g. quinidine, disopyramide) or class III (e.g. amiodarone, sotalol, dofetilide, ibutilide) antiarrhythmic medicinal products, methadone, moxifloxacin, antipsychotics, etc. should be carefully evaluated (see section 4.4).

Effect of food on enzalutamide exposures

Food has no clinically significant effect on the extent of exposure to enzalutamide. In clinical trials, Xtandi was administered without regard to food.

4.6 Fertility, pregnancy and lactation

Women of childbearing potential

There are no human data on the use of Xtandi in pregnancy and this medicinal product is not for use in women of childbearing potential. This medicine may cause harm to the unborn child or potential loss of pregnancy if taken by women who are pregnant (see section 5.3).

Contraception in males and females

It is not known whether enzalutamide or its metabolites are present in semen. A condom is required during and for 3 months after treatment with enzalutamide if the patient is engaged in sexual activity with a pregnant woman. If the patient engages in sexual intercourse with a woman of childbearing

potential, a condom and another form of birth control must be used during and for 3 months after treatment. Studies in animals have shown reproductive toxicity (see section 5.3).

Pregnancy

Enzalutamide is not for use in women. Enzalutamide is contraindicated in women who are or may become pregnant (see sections 4.3 and 5.3).

Breast-feeding

Enzalutamide is not for use in women. It is not known if enzalutamide is present in human milk. Enzalutamide and/or its metabolites are secreted in rat milk (see section 5.3).

Fertility

Animal studies showed that enzalutamide affected the reproductive system in male rats and dogs (see section 5.3).

4.7 Effects on ability to drive and use machines

Enzalutamide may have a moderate influence on the ability to drive and use machines as psychiatric and neurologic events including seizure have been reported (see section 4.8). Patients with a history of seizures or other predisposing factors (see section 4.4) should be advised of the risk of driving or operating machines. No studies to establish the effects of enzalutamide on the ability to drive and use machines have been conducted.

4.8 Undesirable effects

Summary of the safety profile

The most common adverse reactions are asthenia/fatigue, hot flush, headache, and hypertension. Other important adverse reactions include falls, nonpathologic fractures, cognitive disorder, and neutropenia.

Seizure occurred in 0.5% of enzalutamide-treated patients, 0.1% of placebo-treated patients, and 0.3% in bicalutamide-treated patients.

Rare cases of posterior reversible encephalopathy syndrome have been reported in enzalutamide-treated patients (see section 4.4).

Tabulated summary of adverse reactions

Adverse reactions observed during clinical studies are listed below by frequency category. Frequency categories are defined as follows: very common ($\geq 1/10$); common ($\geq 1/100$ to $< 1/10$); uncommon ($\geq 1/1,000$ to $< 1/100$); rare ($\geq 1/10,000$ to $< 1/1,000$); very rare ($< 1/10,000$); not known (cannot be estimated from the available data). Within each frequency grouping, adverse reactions are presented in order of decreasing seriousness.

Table 1: Adverse reactions identified in controlled clinical trials and post-marketing

MedDRA System organ class	Frequency
Blood and lymphatic system disorders	uncommon: leucopenia, neutropenia not known*: thrombocytopenia
Immune system disorders	not known*: tongue oedema, lip oedema, pharyngeal oedema
General disorders	very common: asthenia/fatigue
Psychiatric disorders	common: anxiety uncommon: visual hallucinations
Nervous system disorders	very common: headache common: memory impairment, amnesia, disturbance in attention, restless legs syndrome uncommon: cognitive disorder, seizure not known*: posterior reversible encephalopathy syndrome
Cardiac disorders	not known*: QT-prolongation (see sections 4.4 and 4.5)
Reproductive system and breast disorder	common: gynaecomastia
Vascular disorders	very common: hot flush, hypertension
Gastrointestinal disorders	not known*: nausea, vomiting, diarrhoea
Skin and subcutaneous tissue disorders	common: dry skin, pruritus not known*: rash
Musculoskeletal and connective tissue disorders	common: fractures** not known*: myalgia, muscle spasms, muscular weakness, back pain
Injury, poisoning and procedural complications	common: falls

* Spontaneous reports from post-marketing experience

** Includes all fractures with the exception of pathological fractures

Description of selected adverse reactions

Seizure

In controlled clinical studies, 10 patients (0.5%) experienced a seizure out of 2051 patients treated with a daily dose of 160 mg enzalutamide, whereas one patient (< 0.1%) receiving placebo and one patient (0.3%) receiving bicalutamide, experienced a seizure. Dose appears to be an important predictor of the risk of seizure, as reflected by preclinical data, and data from a dose-escalation study. In the controlled clinical studies, patients with prior seizure or risk factors for seizure were excluded.

In the AFFIRM trial, seven patients (0.9%) experienced a seizure out of 800 post-chemotherapy patients treated with a daily dose of 160 mg enzalutamide, whereas no seizures occurred in patients receiving placebo. Potentially contributing factors were present in several of these patients that may have independently increased their risk of seizure. In the PREVAIL trial, one patient (0.1%) out of 871 chemotherapy-naïve patients treated with a daily dose of 160 mg enzalutamide, and one patient (0.1%) receiving placebo experienced a seizure. In bicalutamide-controlled trials, 3 patients (0.8%) out of 380 chemotherapy-naïve patients treated with enzalutamide and 1 patient (0.3%) out of 387 receiving bicalutamide experienced a seizure.

In a single-arm trial to assess incidence of seizure in patients with predisposing factors for seizure (whereof 1.6% had a history of seizures), 8 of 366 (2.2%) patients treated with enzalutamide experienced a seizure. The median duration of treatment was 9.3 months.

The mechanism by which enzalutamide may lower the seizure threshold is not known, but could be related to data from *in vitro* studies showing that enzalutamide and its active metabolite bind to and can inhibit the activity of the GABA-gated chloride channel.

Reporting of suspected adverse reactions

Reporting suspected adverse reactions after authorisation of the medicinal product is important. It allows continued monitoring of the benefit/risk balance of the medicinal product. Healthcare professionals are asked to report any suspected adverse reactions via the national reporting system listed in Appendix V.

4.9 Overdose

There is no antidote for enzalutamide. In the event of an overdose, treatment with enzalutamide should be stopped and general supportive measures initiated taking into consideration the half-life of 5.8 days. Patients may be at increased risk of seizures following an overdose.

5. PHARMACOLOGICAL PROPERTIES

5.1 Pharmacodynamic properties

Pharmacotherapeutic group: anti-androgen, hormone antagonists and related agents, ATC code: L02BB04

Mechanism of action

Prostate cancer is known to be androgen sensitive and responds to inhibition of androgen receptor signalling. Despite low or even undetectable levels of serum androgen, androgen receptor signalling continues to promote disease progression. Stimulation of tumour cell growth via the androgen receptor requires nuclear localization and DNA binding. Enzalutamide is a potent androgen receptor signalling inhibitor that blocks several steps in the androgen receptor signalling pathway. Enzalutamide competitively inhibits binding of androgens to androgen receptors, inhibits nuclear translocation of activated receptors and inhibits the association of the activated androgen receptor with DNA even in the setting of androgen receptor overexpression and in prostate cancer cells resistant to anti-androgens. Enzalutamide treatment decreases the growth of prostate cancer cells and can induce cancer cell death and tumour regression. In preclinical studies enzalutamide lacks androgen receptor agonist activity.

Pharmacodynamic effects

In a phase 3 clinical trial (AFFIRM) of patients who failed prior chemotherapy with docetaxel, 54% of patients treated with enzalutamide, versus 1.5% of patients who received placebo, had at least a 50% decline from baseline in PSA levels.

In another phase 3 clinical trial (PREVAIL) in chemo-naïve patients, patients receiving enzalutamide demonstrated a significantly higher total PSA response rate (defined as a $\geq 50\%$ reduction from baseline), compared with patients receiving placebo, 78.0% versus 3.5% (difference = 74.5%, $p < 0.0001$).

In a phase 2 clinical trial (TERRAIN) in chemo-naïve patients, patients receiving enzalutamide demonstrated a significantly higher total PSA response rate (defined as a $\geq 50\%$ reduction from baseline), compared with patients receiving bicalutamide, 82.1% versus 20.9% (difference = 61.2%, $p < 0.0001$).

In a single arm study (9785-CL-0410) of patients previously treated with at least 24 weeks of abiraterone (plus prednisone), 22.4% had a $\geq 50\%$ decrease from baseline in PSA levels. According to prior chemotherapy history, the results proportion of patients with a $\geq 50\%$ decrease in PSA levels were 22.1% and 23.2%, for the no prior chemotherapy and prior chemotherapy patient groups, respectively.

Clinical efficacy and safety

Efficacy of enzalutamide was established in two randomized placebo-controlled multicentre phase 3 clinical studies [CRPC2 (AFFIRM), MDV3100-03 (PREVAIL)] of patients with progressive metastatic prostate cancer who had failed androgen deprivation therapy [luteinising hormone-releasing

hormone (LHRH) analogue or after bilateral orchiectomy]. The PREVAIL study enrolled chemotherapy-naive patients; whereas the AFFIRM study enrolled patients who had received prior docetaxel. All patients continued on a LHRH analogue or had prior bilateral orchiectomy. In the active treatment arm, Xtandi was administered orally at a dose of 160 mg daily. In both clinical trials, patients received placebo in the control arm and patients were allowed, but not required, to take prednisone (maximum daily dose allowed was 10 mg prednisone or equivalent).

Changes in PSA serum concentration independently do not always predict clinical benefit. Therefore, in both studies it was recommended that patients be maintained on their study treatments until discontinuation criteria were met as specified below for each study.

MDV3100-03 (PREVAIL) study (chemotherapy-naive patients)

A total of 1717 asymptomatic or mildly symptomatic chemotherapy-naive patients were randomized 1:1 to receive either enzalutamide orally at a dose of 160 mg once daily (N = 872) or placebo orally once daily (N = 845). Patients with visceral disease, patients with a history of mild to moderate heart failure (NYHA Class 1 or 2), and patients taking medications associated with lowering the seizure threshold were allowed. Patients with a previous history of seizure or a condition that might predispose to seizure and patients with moderate or severe pain from prostate cancer were excluded. Study treatment continued until disease progression (evidence of radiographic progression, a skeletal-related event, or clinical progression) and the initiation of either a cytotoxic chemotherapy or an investigational agent, or until unacceptable toxicity.

Patient demographics and baseline disease characteristics were balanced between the treatment arms. The median age was 71 years (range 42-93) and the racial distribution was 77% Caucasian, 10% Asian, 2% Black and 11% other or unknown races. Sixty-eight percent (68%) of patients had an ECOG performance status score of 0 and 32% patients had ECOG performance status 1. Baseline pain assessment was 0-1 (asymptomatic) in 67% of patients and 2-3 (mildly symptomatic) in 32% of patients as defined by the Brief Pain Inventory Short Form (worst pain over past 24 hours on a scale of 0 to 10). Approximately 45% of patients had measurable soft tissue disease at study entry, and 12% of patients had visceral (lung and/or liver) metastases.

Co-primary efficacy endpoints were overall survival and radiographic progression-free survival (rPFS). In addition to the co-primary endpoints, benefit was also assessed using time to initiation of cytotoxic chemotherapy, best overall soft tissue response, time to first skeletal-related event, PSA response ($\geq 50\%$ decrease from baseline), time to PSA progression, and time to FACT-P total score degradation.

Radiographic progression was assessed with the use of sequential imaging studies as defined by Prostate Cancer Clinical Trials Working Group 2 (PCWG2) criteria (for bone lesions) and/or Response Evaluation Criteria in Solid Tumors (RECIST v 1.1) criteria (for soft tissue lesions). Analysis of rPFS utilized centrally-reviewed radiographic assessment of progression.

At the pre-specified interim analysis for overall survival when 540 deaths were observed, treatment with enzalutamide demonstrated a statistically significant improvement in overall survival compared to treatment with placebo with a 29.4% reduction in risk of death [HR = 0.706, (95% CI: 0.596; 0.837), $p < 0.0001$]. An updated survival analysis was conducted when 784 deaths were observed. Results from this analysis were consistent with those from the interim analysis (Table 2, Figure 1). At the updated analysis 52% of enzalutamide-treated and 81% of placebo-treated patients had received subsequent therapies for metastatic CRPC that may prolong overall survival.

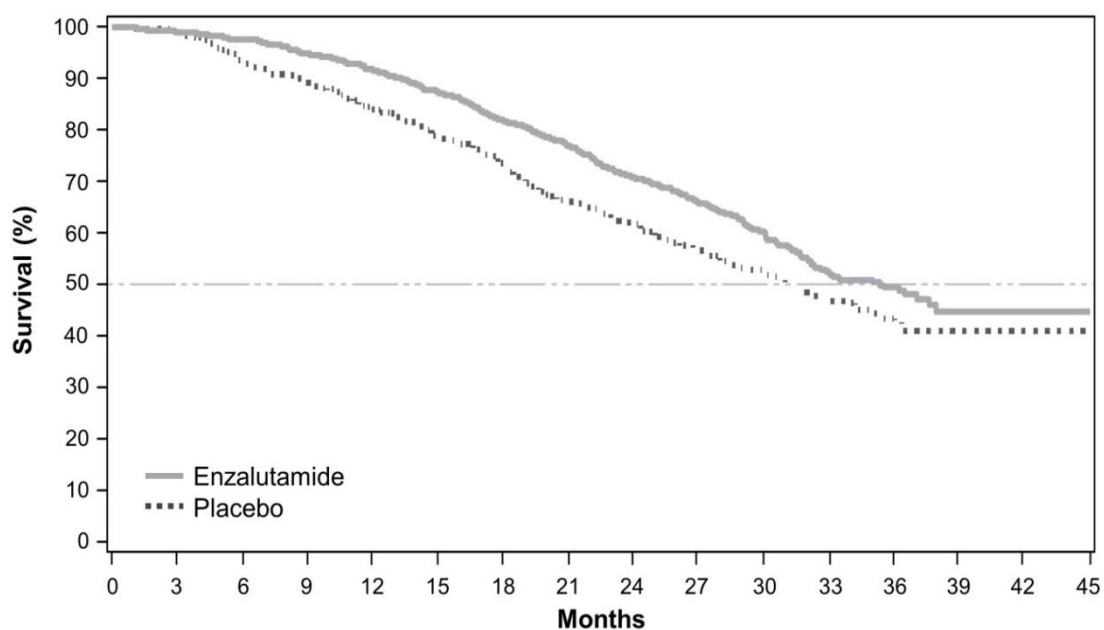
Table 2: Overall Survival of Patients Treated with Either Enzalutamide or Placebo in the PREVAIL Study (Intent-to-Treat Analysis)

	Enzalutamide (N = 872)	Placebo (N = 845)
Pre-specified interim analysis		
Number of deaths (%)	241 (27.6%)	299 (35.4%)
Median survival, months (95% CI)	32.4 (30.1, NR)	30.2 (28.0, NR)
P-value ^a	< 0.0001	
Hazard ratio (95% CI) ^b	0.71 (0.60, 0.84)	
Updated survival analysis		
Number of deaths (%)	368 (42.2%)	416 (49.2%)
Median survival, months (95% CI)	35.3 (32.2, NR)	31.3 (28.8, 34.2)
P-value ^a	0.0002	
Hazard ratio (95% CI) ^b	0.77 (0.67, 0.88)	

^a P-value is derived from an unstratified log-rank test

^b Hazard Ratio is derived from an unstratified proportional hazards model. Hazard ratio <1 favours enzalutamide
NR, not reached.

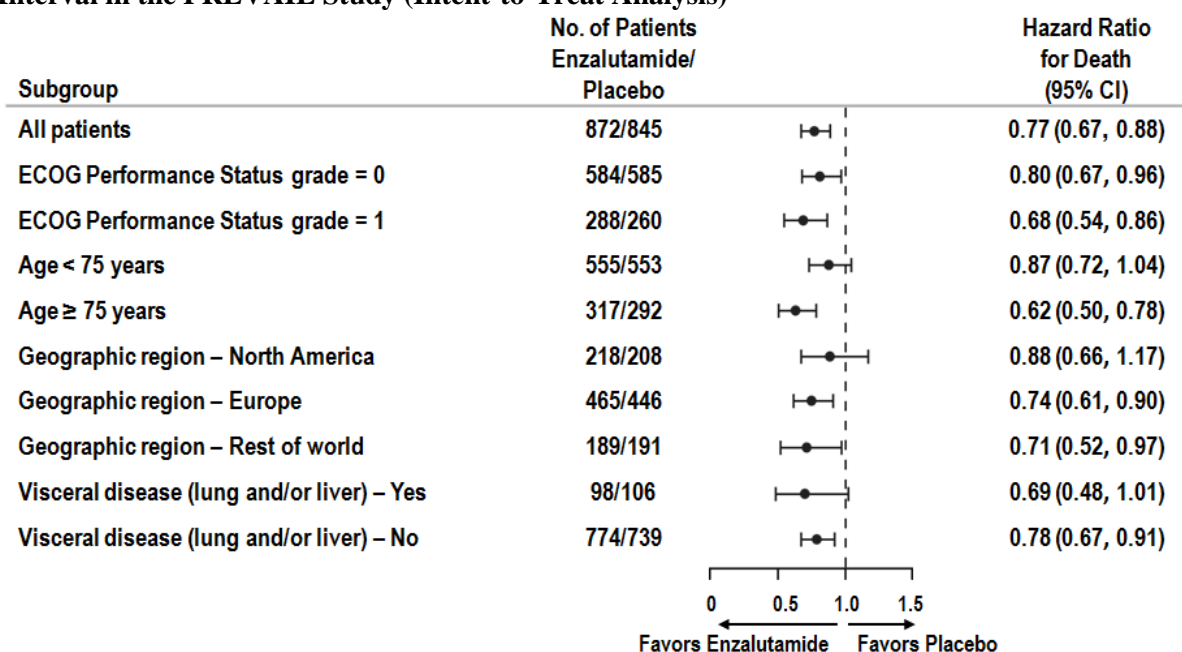
Figure 1: Kaplan-Meier Overall Survival Curves Based on Updated Survival Analysis in the PREVAIL Study (Intent-to-Treat Analysis)



Patients at risk

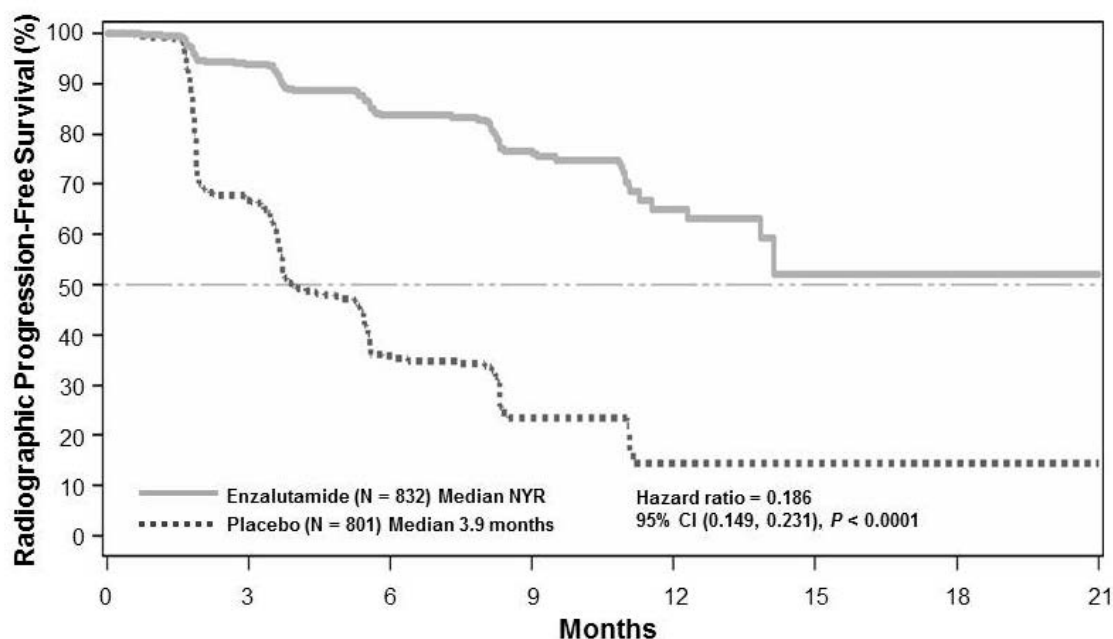
Enzalutamide	872	863	850	824	798	758	710	665	597	441	289	174	86	21	2	0
Placebo	845	835	782	745	702	657	612	551	504	365	254	153	72	16	2	0

Figure 2: Updated Overall Survival Analysis by Subgroup: Hazard Ratio and 95% Confidence Interval in the PREVAIL Study (Intent-to-Treat Analysis)



At the pre-specified rPFS analysis, a statistically significant improvement was demonstrated between the treatment groups with an 81.4% reduction in risk of radiographic progression or death [HR = 0.186 (95% CI: 0.149, 0.231), $p < 0.0001$]. One hundred and eighteen (14%) enzalutamide-treated patients and 321 (40%) of placebo-treated patients had an event. The median rPFS was not reached (95% CI: 13.8, not reached) in the enzalutamide-treated group and was 3.9 months (95% CI: 3.7, 5.4) in the placebo-treated group (Figure 3). Consistent rPFS benefit was observed across all pre-specified patient subgroups (e.g., age, baseline ECOG performance, baseline PSA and LDH, Gleason score at diagnosis, and visceral disease at screening). A pre-specified follow-up rPFS analysis based on the investigator assessment of radiographic progression demonstrated a statistically significant improvement between the treatment groups with a 69.3% reduction in risk of radiographic progression or death [HR = 0.307 (95% CI: 0.267, 0.353), $p < 0.0001$]. The median rPFS was 19.7 months in the enzalutamide group and 5.4 months in the placebo group.

Figure 3: Kaplan-Meier Curves of Radiographic Progression-Free Survival in the PREVAIL Study (Intent-to-Treat Analysis)



Patients at risk

Enzalutamide	832	514	256	128	34	5	1	0
Placebo	801	305	79	20	5	0	0	0

At the time of the primary analysis there were 1633 patients randomized.

In addition to the co-primary efficacy endpoints, statistically significant improvements were also demonstrated in the following prospectively defined endpoints.

The median time to initiation of cytotoxic chemotherapy was 28.0 months for patients receiving enzalutamide and 10.8 months for patients receiving placebo (HR = 0.350, 95% CI: [0.303, 0.403], $p < 0.0001$).

The proportion of enzalutamide-treated patients with measurable disease at baseline who had an objective soft tissue response was 58.8% (95% CI: 53.8, 63.7) compared with 5.0% (95% CI: 3.0, 7.7) of patients receiving placebo. The absolute difference in objective soft tissue response between enzalutamide and placebo arms was 53.9% (95% CI: 48.5%, 59.1%, $p < 0.0001$). Complete responses were reported in 19.7% of enzalutamide-treated patients compared with 1.0% of placebo-treated patients, and partial responses were reported in 39.1% of enzalutamide-treated patients versus 3.9% of placebo-treated patients.

Enzalutamide significantly decreased the risk of the first skeletal-related event by 28% [HR = 0.718 (95% CI: 0.610, 0.844) p -value < 0.0001]. A skeletal-related event was defined as radiation therapy or surgery to bone for prostate cancer, pathologic bone fracture, spinal cord compression, or change of antineoplastic therapy to treat bone pain. The analysis included 587 skeletal-related events, of which 389 events (66.3%) were radiation to bone, 79 events (13.5%) were spinal cord compression, 70 events (11.9%) were pathologic bone fracture, 45 events (7.6%) were change in antineoplastic therapy to treat bone pain, and 22 events (3.7%) were surgery to bone.

Patients receiving enzalutamide demonstrated a significantly higher total PSA response rate (defined as a $\geq 50\%$ reduction from baseline), compared with patients receiving placebo, 78.0% versus 3.5% (difference = 74.5%, $p < 0.0001$).

The median time to PSA progression per PCWG2 criteria was 11.2 months for patients treated with enzalutamide and 2.8 months for patients who received placebo [HR = 0.169, (95% CI: 0.147, 0.195), $p < 0.0001$].

Treatment with enzalutamide decreased the risk of FACT-P degradation by 37.5% compared with placebo ($p < 0.001$). The median time to degradation in FACT-P was 11.3 months in the enzalutamide group and 5.6 months in the placebo group.

9785-CL-0222 (TERRAIN) study (chemotherapy-naïve patients)

The TERRAIN study enrolled 375 chemo- and antiandrogen-therapy naïve patients who were randomized to receive either enzalutamide at a dose of 160 mg once daily ($N = 184$) or bicalutamide at a dose of 50 mg once daily ($N = 191$). Median PFS was 15.7 months for patients on enzalutamide versus 5.8 months for patients on bicalutamide [HR = 0.44 (95% CI: 0.34, 0.57), $p < 0.0001$]. Progression-free survival was defined as objective evidence of radiographic disease progression by independent central review, skeletal-related events, initiation of new antineoplastic therapy or death by any cause, whichever occurred first. Consistent PFS benefit was observed across all pre-specified patient subgroups.

CRPC2 (AFFIRM) study (patients who previously received chemotherapy)

The efficacy and safety of enzalutamide in patients with metastatic castration-resistant prostate cancer who had received docetaxel and were using a LHRH analogue or had undergone orchiectomy were assessed in a randomised, placebo-controlled, multicentre phase 3 clinical trial. A total of 1199 patients were randomised 2:1 to receive either enzalutamide orally at a dose of 160 mg once daily ($N = 800$) or placebo once daily ($N = 399$). Patients were allowed but not required to take prednisone (maximum daily dose allowed was 10 mg prednisone or equivalent). Patients randomised to either arm were to continue treatment until disease progression (defined as confirmed radiographic progression or the occurrence of a skeletal-related event) and initiation of new systemic antineoplastic treatment, unacceptable toxicity, or withdrawal.

The following patient demographics and baseline disease characteristics were balanced between the treatment arms. The median age was 69 years (range 41-92) and the racial distribution was 93% Caucasian, 4% Black, 1% Asian, and 2% Other. The ECOG performance score was 0-1 in 91.5% of patients and 2 in 8.5% of patients; 28% had a mean Brief Pain Inventory score of ≥ 4 (mean of patient's reported worst pain over the previous 24 hours calculated for seven days prior to randomization). Most (91%) patients had metastases in bone and 23% had visceral lung and/or liver involvement. At study entry, 41% of randomized patients had PSA progression only, whereas 59% of patients had radiographic progression. Fifty-one percent (51%) of patients were on bisphosphonates at baseline.

The AFFIRM study excluded patients with medical conditions that may predispose them to seizures (see section 4.8) and medicinal products known to decrease the seizure threshold, as well as clinically significant cardiovascular disease such as uncontrolled hypertension, recent history of myocardial infarction or unstable angina, New York Heart Association class III or IV heart failure (unless ejection fraction was $\geq 45\%$), clinically significant ventricular arrhythmias or AV block (without permanent pacemaker).

The protocol pre-specified interim analysis after 520 deaths showed a statistically significant superiority in overall survival in patients treated with enzalutamide compared to placebo (Table 3 and Figures 4 and 5).

Table 3: Overall Survival of Patients Treated with Either Enzalutamide or Placebo in the AFFIRM Study (Intent-to-Treat Analysis)

	Enzalutamide (N = 800)	Placebo (N = 399)
Deaths (%)	308 (38.5%)	212 (53.1%)
Median survival (months) (95% CI)	18.4 (17.3, NR)	13.6 (11.3, 15.8)
p value ^a	< 0.0001	
Hazard ratio (95% CI) ^b	0.631 (0.529, 0.752)	

^a P-value is derived from a log-rank test stratified by ECOG performance status score (0-1 vs. 2) and mean pain score (< 4 vs. ≥ 4)

^b Hazard Ratio is derived from a stratified proportional hazards model. Hazard ratio < 1 favours enzalutamide
NR, not reached.

Figure 4: Kaplan-Meier Overall Survival Curves in the AFFIRM Study (Intent-to-Treat Analysis)

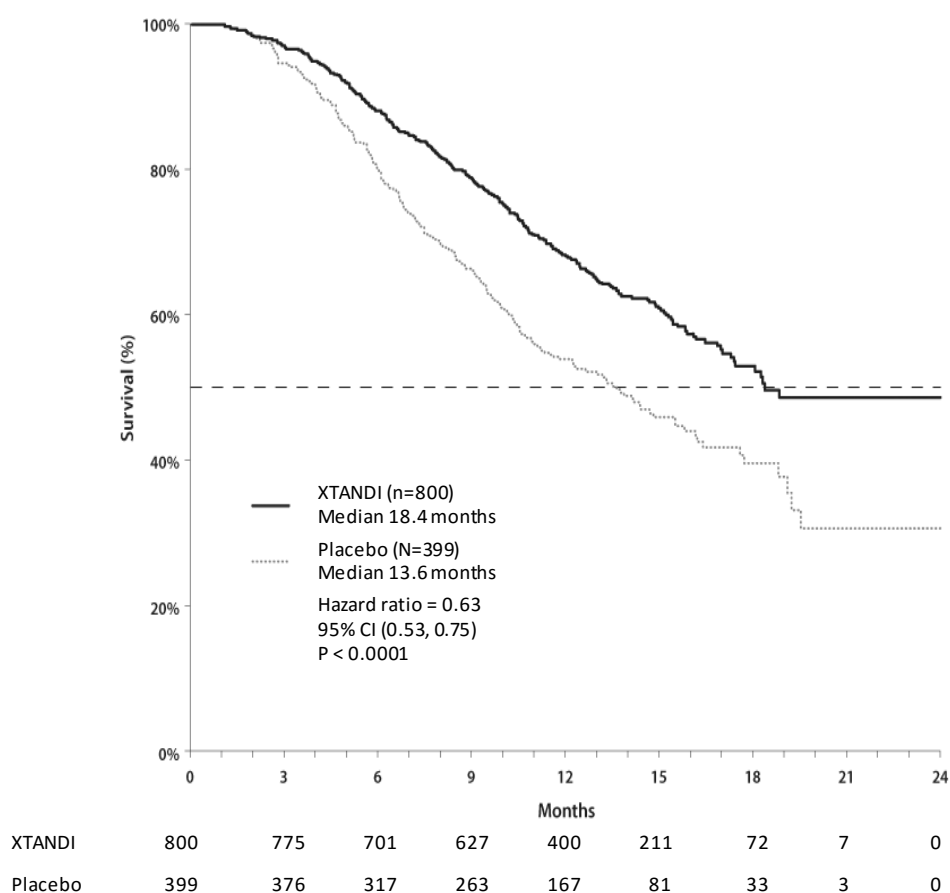
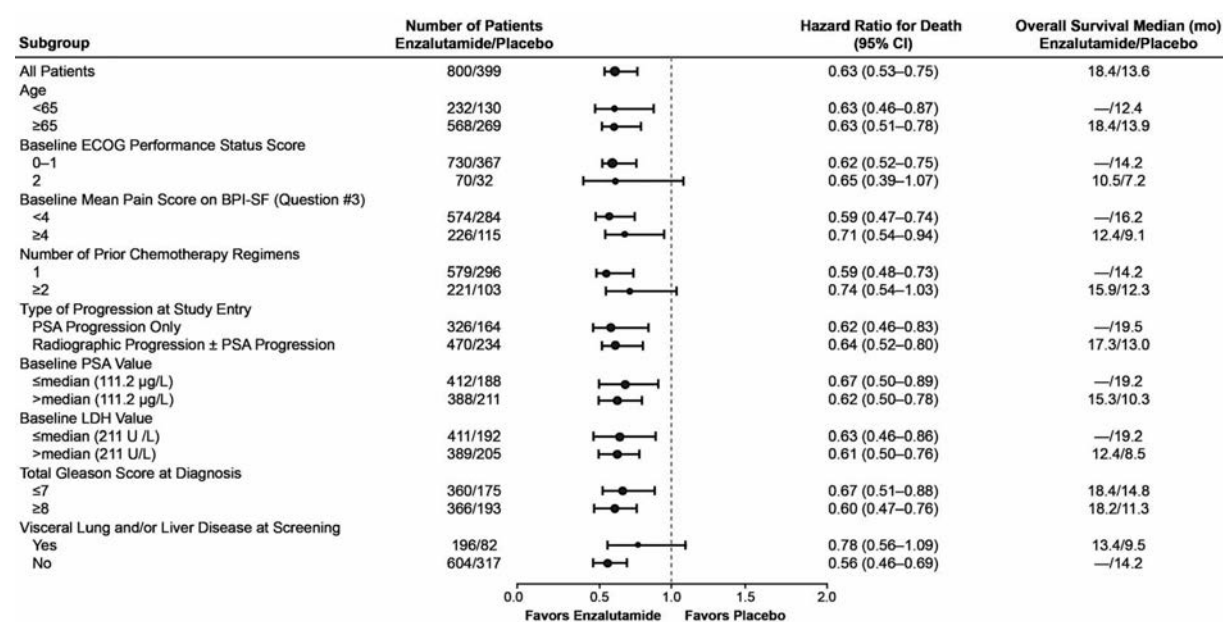


Figure 5: Overall Survival by Subgroup in the AFFIRM Study – Hazard Ratio and 95% Confidence Interval



ECOG: Eastern Cooperative Oncology Group; BPI-SF: Brief Pain Inventory-Short Form; PSA: Prostate Specific Antigen

In addition to the observed improvement in overall survival, key secondary endpoints (PSA progression, radiographic progression-free survival, and time to first skeletal-related event) favoured enzalutamide and were statistically significant after adjusting for multiple testing.

Radiographic progression-free survival as assessed by the investigator using RECIST v 1.1 for soft tissue and appearance of 2 or more bone lesions in bone scan was 8.3 months for patients treated with enzalutamide and 2.9 months for patients who received placebo (HR = 0.404, 95% CI: [0.350, 0.466]; $p < 0.0001$). The analysis involved 216 deaths without documented progression and 645 documented progression events, of which 303 (47%) were due to soft tissue progression, 268 (42%) were due to bone lesion progression and 74 (11%) were due to both soft tissue and bone lesions.

Confirmed PSA decline of 50% or 90% were 54.0% and 24.8%, respectively, for patients treated with enzalutamide and 1.5% and 0.9%, respectively, for patients who received placebo ($p < 0.0001$). The median time to PSA progression was 8.3 months for patients treated with enzalutamide and 3.0 months for patients who received placebo (HR = 0.248, 95% CI: [0.204, 0.303]; $p < 0.0001$).

The median time to first skeletal-related event was 16.7 months for patients treated with enzalutamide and 13.3 months for patients who received placebo (HR = 0.688, 95% CI: [0.566, 0.835]; $p < 0.0001$). A skeletal-related event was defined as radiation therapy or surgery to bone, pathologic bone fracture, spinal cord compression, or change of antineoplastic therapy to treat bone pain. The analysis involved 448 skeletal-related events, of which 277 events (62%) were radiation to bone, 95 events (21%) were spinal cord compression, 47 events (10%) were pathologic bone fracture, 36 events (8%) were change in antineoplastic therapy to treat bone pain and 7 events (2%) were surgery to bone.

9785-CL-0410 study (enzalutamide post abiraterone in patients with metastatic CRPC)

The study was a single-arm study in 214 patients with progressing metastatic CRPC who received enzalutamide (160 mg once daily) after at least 24 weeks of treatment with abiraterone acetate plus prednisone. Median rPFS (radiologic progression free survival, the study’s primary endpoint) was 8.1 months (95% CI: 6.1, 8.3). Median OS was not reached. PSA Response (defined as $\geq 50\%$ decrease from baseline) was 22.4% (95% CI: 17.0, 28.6).

For the 145 patients who previously received chemotherapy, median rPFS was 7.9 months (95% CI: 5.5, 10.8). PSA Response was 23.2% (95% CI: 13.9, 34.9).

For the 69 patients who had no previous chemotherapy, median rPFS was 8.1 months (95% CI: 5.7, 8.3). PSA Response was 22.1% (95% CI: 15.6, 29.7).

Although there was a limited response in some patients from treatment with enzalutamide after abiraterone, the reason for this finding is currently unknown. The study design could neither identify the patients who are likely to benefit, nor the order in which enzalutamide and abiraterone should be optimally sequenced.

Older people

Of the 1671 patients in the phase 3 trials who received enzalutamide, 1261 patients (75%) were 65 years and over and 516 patients (31%) were 75 years and over. No overall differences in safety or effectiveness were observed between these older patients and younger patients.

Paediatric population

The European Medicines Agency has waived the obligation to submit the results of studies with enzalutamide in all subsets of the paediatric population in prostate carcinoma (see section 4.2 for information on paediatric use).

5.2 Pharmacokinetic properties

Enzalutamide is poorly water soluble. In this product, the solubility of enzalutamide is increased by caprylocaproyl macrogolglycerides as emulsifier/surfactant. In preclinical studies, the absorption of enzalutamide was increased when dissolved in caprylocaproyl macrogolglycerides.

The pharmacokinetics of enzalutamide have been evaluated in prostate cancer patients and in healthy male subjects. The mean terminal half-life ($t_{1/2}$) for enzalutamide in patients after a single oral dose is 5.8 days (range 2.8 to 10.2 days), and steady state is achieved in approximately one month. With daily oral administration, enzalutamide accumulates approximately 8.3-fold relative to a single dose. Daily fluctuations in plasma concentrations are low (peak-to-trough ratio of 1.25). Clearance of enzalutamide is primarily via hepatic metabolism, producing an active metabolite that is equally as active as enzalutamide and circulates at approximately the same plasma concentration as enzalutamide.

Absorption

Maximum plasma concentrations (C_{max}) of enzalutamide in patients are observed 1 to 2 hours after administration. Based on a mass balance study in humans, oral absorption of enzalutamide is estimated to be at least 84.2%. Enzalutamide is not a substrate of the efflux transporters P-gp or BCRP. At steady state, the mean C_{max} values for enzalutamide and its active metabolite are 16.6 µg/mL (23% coefficient of variation [CV]) and 12.7 µg/mL (30 %CV), respectively.

Food has no clinically significant effect on the extent of absorption. In clinical trials, Xtandi was administered without regard to food.

Distribution

The mean apparent volume of distribution (V/F) of enzalutamide in patients after a single oral dose is 110 L (29% CV). The volume of distribution of enzalutamide is greater than the volume of total body water, indicative of extensive extravascular distribution. Studies in rodents indicate that enzalutamide and its active metabolite can cross the blood brain barrier.

Enzalutamide is 97% to 98% bound to plasma proteins, primarily albumin. The active metabolite is 95% bound to plasma proteins. There was no protein binding displacement between enzalutamide and other highly bound drugs (warfarin, ibuprofen and salicylic acid) *in vitro*.

Biotransformation

Enzalutamide is extensively metabolized. There are two major metabolites in human plasma: N-desmethyl enzalutamide (active) and a carboxylic acid derivative (inactive). Enzalutamide is metabolized by CYP2C8 and to a lesser extent by CYP3A4/5 (see section 4.5), both of which play a role in the formation of the active metabolite. *In vitro*, N-desmethyl enzalutamide is metabolized to the carboxylic acid metabolite by carboxylesterase 1, which also plays a minor role in the metabolism of enzalutamide to the carboxylic acid metabolite. N-desmethyl enzalutamide was not metabolized by CYPs *in vitro*.

Under conditions of clinical use, enzalutamide is a strong inducer of CYP3A4, a moderate inducer of CYP2C9 and CYP2C19, and has no clinically relevant effect on CYP2C8 (see section 4.5).

Elimination

The mean apparent clearance (CL/F) of enzalutamide in patients ranges from 0.520 and 0.564 L/h.

Following oral administration of ¹⁴C-enzalutamide, 84.6% of the radioactivity is recovered by 77 days post dose: 71.0% is recovered in urine (primarily as the inactive metabolite, with trace amounts of enzalutamide and the active metabolite), and 13.6% is recovered in faeces (0.39% of dose as unchanged enzalutamide).

In vitro data indicate that enzalutamide is not a substrate for OATP1B1, OATP1B3, or OCT1; and N-desmethyl enzalutamide is not a substrate for P-gp or BCRP.

In vitro data indicate that enzalutamide and its major metabolites do not inhibit the following transporters at clinically relevant concentrations: OATP1B1, OATP1B3, OCT2, or OAT1.

Linearity

No major deviations from dose proportionality are observed over the dose range 40 to 160 mg. The steady-state C_{min} values of enzalutamide and the active metabolite in individual patients remained constant during more than one year of chronic therapy, demonstrating time-linear pharmacokinetics once steady-state is achieved.

Renal impairment

No formal renal impairment study for enzalutamide has been completed. Patients with serum creatinine > 177 µmol/L (2 mg/dL) were excluded from clinical trials. Based on a population pharmacokinetic analysis, no dose adjustment is necessary for patients with calculated creatinine clearance (CrCL) values ≥ 30 mL/min (estimated by the Cockcroft and Gault formula). Enzalutamide has not been evaluated in patients with severe renal impairment (CrCL < 30 mL/min) or end-stage renal disease, and caution is advised when treating these patients. It is unlikely that enzalutamide will be significantly removed by intermittent haemodialysis or continuous ambulatory peritoneal dialysis.

Hepatic impairment

Hepatic impairment did not have a pronounced effect on the total exposure to enzalutamide or its active metabolite. Drug half-life was however doubled in patients with severe hepatic impairment compared with healthy controls (10.4 days compared to 4.7 days), possibly related to an increased tissue distribution.

The pharmacokinetics of enzalutamide were examined in subjects with baseline mild (N = 6), moderate (N = 8) or severe (N=8) hepatic impairment (Child-Pugh Class A, B or C, respectively) and in 22 matched control subjects with normal hepatic function. Following a single oral 160 mg dose of enzalutamide, the AUC and C_{max} for enzalutamide in subjects with mild impairment increased by 5% and 24%, respectively, the AUC and C_{max} of enzalutamide in subjects with moderate impairment increased by 29% and decreased by 11%, respectively, and the AUC and C_{max} of enzalutamide in subjects with severe impairment increased by 5% and decreased by 41%, respectively, compared to healthy control subjects. For the sum of unbound enzalutamide plus the unbound active metabolite, the AUC and C_{max} in subjects with mild impairment increased by 14% and 19%, respectively, the AUC and C_{max} in subjects with moderate impairment increased by 14% and decreased by 17%, respectively,

and the AUC and C_{max} in subjects with severe hepatic impairment increased by 34% and decreased by 27%, respectively, compared to healthy control subjects.

Race

Most patients in the clinical trials (> 84%) were Caucasian. Based on pharmacokinetic data from a study in Japanese patients with prostate cancer, there were no clinically relevant differences in exposure between Japanese and Caucasians. There are insufficient data to evaluate potential differences in the pharmacokinetics of enzalutamide in other races.

Older people

No clinically relevant effect of age on enzalutamide pharmacokinetics was seen in the population pharmacokinetic analysis.

5.3 Preclinical safety data

Enzalutamide treatment of pregnant mice resulted in an increased incidence of embryo-fetal deaths and external and skeletal changes. Reproductive toxicology studies were not conducted with enzalutamide, but in studies in rats (4 and 26 weeks) and dogs (4, 13, and 39 weeks), atrophy, aspermia/hypospermia, and hypertrophy/hyperplasia in the reproductive system were noted, consistent with the pharmacological activity of enzalutamide. In studies in mice (4 weeks), rats (4 and 26 weeks) and dogs (4, 13, and 39 weeks), changes in the reproductive organs associated with enzalutamide were decreases in organ weight with atrophy of the prostate and epididymis. Leydig cell hypertrophy and/or hyperplasia were observed in mice (4 weeks) and dogs (39 weeks). Additional changes to reproductive tissues included hypertrophy/hyperplasia of the pituitary gland and atrophy in seminal vesicles in rats and testicular hypospermia and seminiferous tubule degeneration in dogs. Gender differences were noted in rat mammary glands (male atrophy and female lobular hyperplasia). Changes in the reproductive organs in both species were consistent with the pharmacological activity of enzalutamide and reversed or partially resolved after an 8-week recovery period. There were no other important changes in clinical pathology or histopathology in any other organ system, including the liver, in either species.

Studies in pregnant rats have shown that enzalutamide and/or its metabolites are transferred to fetuses. After oral administration of radiolabeled ^{14}C -enzalutamide to rats on day 14 of pregnancy at a dose of 30 mg/kg (~ 1.9 times the maximum dose indicated in humans), the maximum radioactivity in the fetus was reached 4 hours after administration and was lower than that in the maternal plasma with tissue/plasma ratio of 0.27. The radioactivity in the fetus decreased to 0.08 times the maximum concentration at 72 hours after administration.

Studies in lactating rats have shown that enzalutamide and/or its metabolites are secreted in rat milk. After oral administration of radiolabeled ^{14}C -enzalutamide to lactating rats at a dose of 30 mg/kg (~ 1.9 times the maximum dose indicated in humans), the maximum radioactivity in the milk was reached 4 hours after administration and was up to 3.54-fold higher than that in the maternal plasma. Study results also have shown that enzalutamide and/or its metabolites are transferred to infant rat tissues via milk and subsequently eliminated.

Enzalutamide did not induce mutations in the microbial mutagenesis (Ames) assay and was not clastogenic in either the *in vitro* cytogenetic assay with mouse lymphoma cells or the *in vivo* mouse micronucleus assay. Long-term animal studies to evaluate the carcinogenic potential of enzalutamide have not been conducted. Enzalutamide was not phototoxic *in vitro*.

6. PHARMACEUTICAL PARTICULARS

6.1 List of excipients

Capsule contents

Caprylocaproyl macrogol-8 glycerides

Butylhydroxyanisole (E320)

Butylhydroxytoluene (E321)

Capsule shell

Gelatin

Sorbitol sorbitan solution

Glycerol

Titanium dioxide (E171)

Purified water

Printing ink

Iron oxide black (E172)

Polyvinyl acetate phthalate

6.2 Incompatibilities

Not applicable.

6.3 Shelf life

3 years.

6.4 Special precautions for storage

This medicinal product does not require any special storage conditions.

6.5 Nature and contents of container

Cardboard wallet incorporating a PVC/PCTFE/aluminium blister of 28 soft capsules. Each carton contains 4 wallets (112 soft capsules).

6.6 Special precautions for disposal

Any unused medicinal product or waste material should be disposed of in accordance with local requirements.

7. MARKETING AUTHORISATION HOLDER

Astellas Pharma Europe B.V.

Sylviusweg 62

2333 BE Leiden

The Netherlands

8. MARKETING AUTHORISATION NUMBER(S)

EU/1/13/846/001

9. DATE OF FIRST AUTHORISATION/RENEWAL OF THE AUTHORISATION

Date of first authorisation: 21 June 2013

10. DATE OF REVISION OF THE TEXT

Detailed information on this medicinal product is available on the website of the European Medicines Agency <http://www.ema.europa.eu>.

ANNEX II

- A. MANUFACTURER(S) RESPONSIBLE FOR BATCH RELEASE**
- B. CONDITIONS OR RESTRICTIONS REGARDING SUPPLY AND USE**
- C. OTHER CONDITIONS AND REQUIREMENTS OF THE MARKETING AUTHORISATION**
- D. CONDITIONS OR RESTRICTIONS WITH REGARD TO THE SAFE AND EFFECTIVE USE OF THE MEDICINAL PRODUCT**

A. MANUFACTURER(S) RESPONSIBLE FOR BATCH RELEASE

Name and address of the manufacturer(s) responsible for batch release

Astellas Pharma Europe B.V.
Sylviusweg 62
2333 BE Leiden
The Netherlands

The printed package leaflet of the medicinal product must state the name and address of the manufacturer responsible for the release of the concerned batch.

B. CONDITIONS OR RESTRICTIONS REGARDING SUPPLY AND USE

Medicinal product subject to medical prescription.

C. OTHER CONDITIONS AND REQUIREMENTS OF THE MARKETING AUTHORISATION

• Periodic Safety Update Reports

The marketing authorisation holder shall submit the first periodic safety update report for this product within 8 months following authorisation. Subsequently, the marketing authorisation holder shall submit periodic safety update reports for this product in accordance with the requirements set out in the list of Union reference dates (EURD list) provided for under Article 107c(7) of Directive 2001/83/EC and published on the European medicines web-portal.

D. CONDITIONS OR RESTRICTIONS WITH REGARD TO THE SAFE AND EFFECTIVE USE OF THE MEDICINAL PRODUCT

• Risk Management Plan (RMP)

The MAH shall perform the required pharmacovigilance activities and interventions detailed in the agreed RMP presented in Module 1.8.2 of the Marketing Authorisation and any agreed subsequent updates of the RMP.

An updated RMP should be submitted:

- At the request of the European Medicines Agency;
- Whenever the risk management system is modified, especially as the result of new information being received that may lead to a significant change to the benefit/risk profile or as the result of an important (pharmacovigilance or risk minimisation) milestone being reached.

If the dates for submission of a PSUR and the update of a RMP coincide, they can be submitted at the same time.

ANNEX III
LABELLING AND PACKAGE LEAFLET

A. LABELLING

PARTICULARS TO APPEAR ON THE OUTER PACKAGING

OUTER CARTON WITH BLUE BOX

1. NAME OF THE MEDICINAL PRODUCT

Xtandi 40 mg soft capsules
enzalutamide

2. STATEMENT OF ACTIVE SUBSTANCE(S)

Each capsule contains 40 mg enzalutamide.

3. LIST OF EXCIPIENTS

Contains sorbitol (E420).
See leaflet for further information.

4. PHARMACEUTICAL FORM AND CONTENTS

112 soft capsules

5. METHOD AND ROUTE(S) OF ADMINISTRATION

Read the package leaflet before use.
Oral use.

6. SPECIAL WARNING THAT THE MEDICINAL PRODUCT MUST BE STORED OUT OF THE SIGHT AND REACH OF CHILDREN

Keep out of the sight and reach of children.

7. OTHER SPECIAL WARNING(S), IF NECESSARY

8. EXPIRY DATE

EXP

9. SPECIAL STORAGE CONDITIONS

10. SPECIAL PRECAUTIONS FOR DISPOSAL OF UNUSED MEDICINAL PRODUCTS OR WASTE MATERIALS DERIVED FROM SUCH MEDICINAL PRODUCTS, IF APPROPRIATE

11. NAME AND ADDRESS OF THE MARKETING AUTHORISATION HOLDER

Astellas Pharma Europe B.V.
Sylviusweg 62
2333 BE Leiden
The Netherlands

12. MARKETING AUTHORISATION NUMBER(S)

EU/1/13/846/001 112 soft capsules

13. BATCH NUMBER

Lot

14. GENERAL CLASSIFICATION FOR SUPPLY

Medicinal product subject to medical prescription.

15. INSTRUCTIONS ON USE

16. INFORMATION IN BRAILLE

xtandi 40 mg

PARTICULARS TO APPEAR ON THE IMMEDIATE PACKAGING

WALLET WITHOUT BLUE BOX

1. NAME OF THE MEDICINAL PRODUCT

Xtandi 40 mg soft capsules
enzalutamide

2. STATEMENT OF ACTIVE SUBSTANCE(S)

Each capsule contains 40 mg enzalutamide.

3. LIST OF EXCIPIENTS

Contains sorbitol (E420).
See leaflet for further information.

4. PHARMACEUTICAL FORM AND CONTENTS

28 soft capsules

5. METHOD AND ROUTE(S) OF ADMINISTRATION

Read the package leaflet before use.

Oral use.

Monday
Tuesday
Wednesday
Thursday
Friday
Saturday
Sunday

6. SPECIAL WARNING THAT THE MEDICINAL PRODUCT MUST BE STORED OUT OF THE SIGHT AND REACH OF CHILDREN

Keep out of the sight and reach of children.

7. OTHER SPECIAL WARNING(S), IF NECESSARY

8. EXPIRY DATE

EXP

9. SPECIAL STORAGE CONDITIONS

10. SPECIAL PRECAUTIONS FOR DISPOSAL OF UNUSED MEDICINAL PRODUCTS OR WASTE MATERIALS DERIVED FROM SUCH MEDICINAL PRODUCTS, IF APPROPRIATE

11. NAME AND ADDRESS OF THE MARKETING AUTHORISATION HOLDER

Astellas Pharma Europe B.V.
Sylviusweg 62
2333 BE Leiden
The Netherlands

12. MARKETING AUTHORISATION NUMBER(S)

13. BATCH NUMBER

Lot

14. GENERAL CLASSIFICATION FOR SUPPLY

Medicinal product subject to medical prescription.

15. INSTRUCTIONS ON USE

16. INFORMATION IN BRAILLE

xtandi 40 mg

MINIMUM PARTICULARS TO APPEAR ON BLISTERS OR STRIPS

BLISTER

1. NAME OF THE MEDICINAL PRODUCT

Xtandi 40 mg

2. NAME OF THE MARKETING AUTHORISATION HOLDER

3. EXPIRY DATE

EXP

4. BATCH NUMBER

Lot

5. OTHER

B. PACKAGE LEAFLET

Package leaflet: Information for the patient

Xtandi 40 mg soft capsules enzalutamide

▼ This medicine is subject to additional monitoring. This will allow quick identification of new safety information. You can help by reporting any side effects you may get. See the end of section 4 for how to report side effects.

Read all of this leaflet carefully before you start taking this medicine because it contains important information for you.

- Keep this leaflet. You may need to read it again.
- If you have any further questions, ask your doctor.
- This medicine has been prescribed for you only. Do not pass it on to others. It may harm them, even if their signs of illness are the same as yours.
- If you get any side effects, talk to your doctor. This includes any possible side effects not listed in this leaflet. See section 4.

What is in this leaflet

1. What Xtandi is and what it is used for
2. What you need to know before you take Xtandi
3. How to take Xtandi
4. Possible side effects
5. How to store Xtandi
6. Contents of the pack and other information

1. What Xtandi is and what it is used for

Xtandi contains the active substance enzalutamide. Xtandi is used to treat adult men with prostate cancer that has spread to other parts of the body.

How Xtandi works

Xtandi is a medicine that works by blocking the activity of hormones called androgens (such as testosterone). By blocking androgens, enzalutamide stops prostate cancer cells from growing and dividing.

2. What you need to know before you take Xtandi

Do not take Xtandi:

- If you are allergic (hypersensitive) to enzalutamide or any of the other ingredients of this medicine (listed in section 6).
- If you are pregnant or may become pregnant (see 'Pregnancy, breast-feeding and fertility')

Warnings and precautions

Seizure

Seizures were reported in 5 in every 1,000 people taking Xtandi, and fewer than one in every 1,000 people taking placebo (see also 'Other medicines and Xtandi' in this section and section 4 'Possible side effects').

Some situations in which you may have a higher risk of seizure include:

- If you had earlier episodes of seizure
- If you have had a serious head injury or a history of head trauma
- If you have had certain kinds of stroke
- If you have had a brain tumour or cancer which has spread to the brain
- If you drink very large amounts of alcohol either regularly or from time to time

- If you are taking a medicine that can cause seizures or that can increase the susceptibility for having seizures (see ‘Other medicines and Xtandi’ below)

If you have a seizure during treatment:

Stop taking Xtandi and do not take any more capsules. See your doctor as soon as possible.

Posterior Reversible Encephalopathy Syndrome (PRES)

There have been rare reports of PRES, a rare, reversible condition involving the brain, in patients treated with XTANDI. If you have a seizure, worsening headache, confusion, blindness or other vision problems, please contact your doctor as soon as possible. (See also section 4 ‘Possible side effects’).

Talk to your doctor before taking Xtandi

- If you are taking any medicines to prevent blood clots (e.g. warfarin, acenocoumarol)
- If you have problems with your liver
- If you have problems with your kidneys

Please tell your doctor if you have any of the following:

Any heart or blood vessel conditions, including heart rhythm problems (arrhythmia), or are being treated with medicines for these conditions. The risk of heart rhythm problems may be increased when using Xtandi.

If any of the above applies to you or you are not sure, talk to your doctor before taking this medicine.

Children and adolescents

This medicine is not for use in children and adolescents.

Other medicines and Xtandi

Tell your doctor if you are taking, have recently taken or might take any other medicines. You need to know the names of the medicines you take. Keep a list of them with you to show to your doctor when you are prescribed a new medicine. You should not start or stop taking any medicine before you talk with the doctor that prescribed Xtandi.

Tell your doctor if you are taking any of the following medicines. When taken at the same time as Xtandi, these medicines may increase the risk of a seizure:

- Certain medicines used to treat asthma and other respiratory diseases (e.g. aminophylline, theophylline)
- Medicines used to treat certain psychiatric disorders such as depression and schizophrenia (e.g. clozapine, olanzapine, risperidone, ziprasidone, bupropion, lithium, chlorpromazine, mesoridazine, thioridazine, amitriptyline, desipramine, doxepin, imipramine, maprotiline, mirtazapine)
- Certain medicines for the treatment of pain (e.g. pethidine)

Tell your doctor if you are taking the following medicines. These medicines may influence the effect of Xtandi, or Xtandi may influence the effect of these medicines:

This includes certain medicines used to:

- Lower cholesterol (e.g. gemfibrozil, atorvastatin, simvastatin)
- Treat pain (e.g. fentanyl, tramadol)
- Treat cancer (e.g. cabazitaxel)
- Treat epilepsy (e.g. carbamazepine, clonazepam, phenytoin, primidone, valproic acid)
- Treat certain psychiatric disorders such as severe anxiety or schizophrenia (e.g. diazepam, midazolam, haloperidol)
- Treat sleep disorders (e.g. zolpidem)
- Treat heart conditions or lower blood pressure (e.g. bisoprolol, digoxin, diltiazem, felodipine, nifedipine, nifedipine, propranolol, verapamil)

- Treat serious disease related to inflammation (e.g. dexamethasone, prednisolone)
- Treat HIV infection (e.g. indinavir, ritonavir)
- Treat bacterial infections (e.g. clarithromycin, doxycycline)
- Treat thyroid disorders (e.g. levothyroxine)
- Treat gout (e.g. colchicine)
- Prevent heart conditions or strokes (dabigatran etexilate)

Xtandi might interfere with some medicines used to treat heart rhythm problems (e.g. quinidine, procainamide, amiodarone and sotalol) or might increase the risk of heart rhythm problems when used with some other drugs (e.g. methadone (used for pain relief and part of drug addiction detoxification), moxifloxacin (an antibiotic), antipsychotics used for serious mental illnesses).

Tell your doctor if you are taking any of the medicines listed above. The dose of Xtandi or any other medicines that you are taking may need to be changed.

Pregnancy, breast-feeding and fertility

- **Xtandi is not for use in women.** This medicine may cause harm to the unborn child or potential loss of pregnancy if taken by women who are pregnant. It must not be taken by women who are pregnant, may become pregnant, or who are breast-feeding.
- This medicine could possibly have an effect on male fertility.
- If you are having sex with a woman who can become pregnant, use a condom and another effective birth control method, during treatment and for 3 months after treatment with this medicine. If you are having sex with a pregnant woman, use a condom to protect the unborn child.

Driving and using machines

This medicine may have a moderate effect on your ability to drive or use any tools or machines as the side effects for Xtandi include seizures. If you are at higher risk of seizures (see Section 2), talk to your doctor.

Xtandi contains sorbitol

This medicine contains sorbitol (a type of sugar). If you have been told by your doctor that you have an intolerance to some sugars, contact your doctor before taking this medicine.

3. How to take Xtandi

Always take this medicine exactly as your doctor has told you. Check with your doctor if you are not sure.

The usual dose is 160 mg (four capsules), taken at the same time once a day.

Taking Xtandi

- Swallow the capsules whole with water.
- Do not chew, dissolve or open the capsules before swallowing.
- Xtandi can be taken with or without food.

Your doctor may also prescribe other medicines while you are taking Xtandi.

If you take more Xtandi than you should

If you take more capsules than prescribed, stop taking Xtandi and contact your doctor. You may have an increased risk of seizure or other side effects.

If you forget to take Xtandi

- If you forget to take Xtandi at the usual time, take your usual dose as soon as you remember.
- If you forget to take Xtandi for the whole day, take your usual dose the following day.
- If you forget to take Xtandi for more than one day, talk to your doctor immediately.
- **Do not take a double dose** to make up for the dose you forgot.

If you stop taking Xtandi

Do not stop taking this medicine unless your doctor tells you to.

If you have any further questions on the use of this medicine, ask your doctor.

4. Possible side effects

Like all medicines, this medicine can cause side effects, although not everybody gets them.

Seizures

Seizures were reported in 5 in every 1,000 people taking Xtandi, and fewer than one in every 1,000 people taking placebo.

Seizures are more likely if you take more than the recommended dose of this medicine, if you take certain other medicines, or if you are at higher than usual risk of seizure (see section 2).

If you have a seizure, see your doctor as soon as possible. Do not take any more Xtandi.

Posterior Reversible Encephalopathy Syndrome (PRES)

There have been rare reports of PRES (may affect up to 1 in 1,000 people), a rare, reversible condition involving the brain, in patients treated with XTANDI. If you have a seizure, worsening headache, confusion, blindness or other vision problems, please contact your doctor as soon as possible.

Other possible side effects include:

Very common (may affect more than 1 in 10 people)

Tiredness, headache, hot flushes, high blood pressure

Common (may affect up to 1 in 10 people)

Falls, broken bones, feeling anxious, dry skin, itching, difficulty remembering, breast enlargement in men (gynaecomastia), symptom of restless legs syndrome (an uncontrollable urge to move a part of the body, usually the leg), reduced concentration, forgetfulness

Uncommon (may affect up to 1 in 100 people)

Hallucinations, difficulty thinking clearly, low white blood cell count

Not known (frequency cannot be estimated from the available data)

Muscle pain, muscle spasms, muscular weakness, back pain, changes in ECG (QT prolongation), upset stomach including feeling sick (nausea), rash, being sick (vomiting), swelling of the lips, tongue and/or throat, reduction in blood platelets (which increases risk of bleeding or bruising), diarrhoea

Reporting of side effects

If you get any side effects, talk to your doctor. This includes any possible side effects not listed in this leaflet. You can also report side effects directly via [the national reporting system listed in Appendix V](#). By reporting side effects you can help provide more information on the safety of this medicine.

5. How to store Xtandi

Keep this medicine out of the sight and reach of children.

Do not use this medicine after the expiry date which is stated on the cardboard wallet and outer carton. The expiry date refers to the last day of that month.

This medicine does not require any special storage conditions.

Do not take any capsule that is leaking, damaged, or shows signs of tampering.

Do not throw away any medicines via wastewater or household waste. Ask your pharmacist how to throw away medicines you no longer use. These measures will help protect the environment.

6. Contents of the pack and other information

What Xtandi contains

- The active substance is enzalutamide. Each capsule contains 40 mg of enzalutamide.
- The other ingredients of the capsule are caprylocaproyl macrogol-8 glycerides, butylhydroxyanisole (E320), and butylhydroxytoluene (E321).
- The ingredients of the capsule shell are gelatin, sorbitol sorbitan solution (see section 2), glycerol, titanium dioxide (E171), and purified water.
- The ingredients of the ink are iron oxide black (E172) and polyvinyl acetate phthalate.

What Xtandi looks like and contents of the pack

- Xtandi capsules are white to off-white, oblong soft capsules (approximately 20 mm by 9 mm) with "ENZ" written on one side.
- Each carton contains 112 capsules in 4 blister wallets of 28 capsules each.

Marketing Authorisation Holder and Manufacturer

Astellas Pharma Europe B.V.
Sylviusweg 62
2333 BE Leiden
The Netherlands

For any information about this medicine, please contact the local representative of the Marketing Authorisation Holder:

België/Belgique/Belgien

Astellas Pharma B.V. Branch
Tél/Tel: + 32 (0)2 5580710

Lietuva

Astellas Pharma a/s
Danija
Tel: +45 4343 0355

България

Астелас Фарма ЕООД
Тел.: + 359 2 862 53 72

Luxembourg/Luxemburg

Astellas Pharma B.V.Branch
Belgique/Belgien
Tél/Tel: + 32 (0)2 5580710

Česká republika

Astellas Pharma s.r.o.
Tel: +420 236 080300

Magyarország

Astellas Pharma Kft.
Tel.: + 36 1 577 8200

Danmark

Astellas Pharma a/s
Tlf: + 45 43 430355

Deutschland

Astellas Pharma GmbH
Tel: + 49 (0)89 454401

Eesti

Astellas Pharma a/s
Taani
Tel: +45 4343 0355

Ελλάδα

Astellas Pharmaceuticals AEBE
Τηλ: +30 210 8189900

España

Astellas Pharma S.A.
Tel: + 34 91 4952700

France

Astellas Pharma S.A.S.
Tél: + 33 (0)1 55917500

Hrvatska

Astellas d.o.o.
Tel: +385 1 670 01 02

Ireland

Astellas Pharma Co. Ltd.
Tel: + 353 (0)1 4671555

Ísland

Vistor hf
Sími: + 354 535 7000

Italia

Astellas Pharma S.p.A.
Tel: + 39 02 921381

Κύπρος

Astellas Pharmaceuticals AEBE
Ελλάδα
Τηλ: +30 210 8189900

Latvija

Astellas Pharma a/s
Dānija
Tel: +45 4343 0355

Malta

E.J. Busuttil Ltd.
Tel: +356 21 447184

Nederland

Astellas Pharma B.V.
Tel: + 31 (0)71 5455745

Norge

Astellas Pharma
Tlf: + 47 66 76 46 00

Österreich

Astellas Pharma Ges.m.b.H.
Tel: + 43 (0)1 8772668

Polska

Astellas Pharma Sp.z.o.o.
Tel.: + 48 225451 111

Portugal

Astellas Farma, Lda.
Tel: + 351 21 4401320

România

S.C.Astellas Pharma SRL
Tel: +40 (0)21 361 04 95 /96 /92

Slovenija

Astellas Pharma d.o.o.
Tel: +386 14011 400

Slovenská republika

Astellas Pharma s.r.o.,
Tel: +421 2 4444 2157

Suomi/Finland

Astellas Pharma
Puh/Tel: +358 (0)9 85606000

Sverige

Astellas Pharma AB
Tel: + 46 (0)40-650 15 00

United Kingdom

Astellas Pharma Ltd.
Tel: +44 (0)203 379 8700

This leaflet was last revised in MM/YYYY.

Detailed information on this medicine is available on the European Medicines Agency web site:
<http://www.ema.europa.eu>.